



Women's  
**SAFETY**  
Wear

**2023**



# WOMEN'S SAFETY WEAR 2023



## Stand Out and Be Seen with Pioneer®

Pioneer® is proud to offer the widest range of women's safety apparel available on the market today. The following pages feature garments made to keep the woman worker comfortable, safe, and productive.

Whether it's construction work, forestry, utilities, or warehousing, Pioneer® has women covered even in the toughest working conditions.



## Women's Hi-Vis Surveyor's Safety Vests

V1011250 | 6692W | Hi-Vis Orange

V1011260 | 6693W | Hi-Vis Yellow/Green

**NEW**

- Durable 150D polyester twill, soft-to-hand touch
- Water-repellent, tear-resistant
- CSA Z96-22 Class 2 Level 2
- ANSI/ISEA 107-2020 Class 2 Type P & R
- 4" Premium Startech® reflective tape
- Multiple-layer pockets and pen slots on front panel
- Large lower cargo pocket with grommets
- Back panel pocket with zip access
- Inner pockets with zip closure
- Total 15 pockets
- Breathable mesh side panels
- Tailored for women's fit
- Cellphone pocket and D-ring access slot
- **SIZE RANGE:** XS-4XL



6692W

6693W

## Women's Hi-Vis Safety Tear-Away Vests

V1023650 | 486 | Hi-Vis Orange

V1023660 | 489 | Hi-Vis Yellow/Green

- 3.5 oz (120 GSM) polyester mesh
- CSA Z96-22 Class 2 Level 2
- ANSI/ISEA 107-2020 Class 2 Type P and R
- Premium StarTech® reflective tape
- 5-point tear-away
- ID pocket with pen holders
- Full tear-away front zipper
- Inside storage and cell phone pockets
- Lower pockets with flaps
- Radiophone clip straps
- Designed for women with a tapered waist and flared bottom
- **SIZE RANGE:** XS-2XL



486

489

## Hi-Vis Women's Safety Vests

V1021840 | 139PK | Pink

V1021850 | 136 | Hi-Vis Orange

V1021860 | 139 | Hi-Vis Yellow/Green

V1021870 | 139BK | Black

- Tricot polyester interlock
- 136/139 – CSA Z96-22 Class 2 Level 2 and ANSI/ISEA 107-2020 Class 2 Type P and R
- 139BK/139PK – CSA Z96-22 Class 1 Level 2 and ANSI/ISEA 107-2020 Class 1 Type O
- Premium StarTech® reflective tape
- ID pocket with pen holders
- Full front zipper
- Storage, cell phone and inside pockets
- Radiophone clip strap
- Designed for women with a tapered waist and flared bottom
- **SIZE RANGE:** XS-3XL



139PK

136

139

139BK

## Hi-Vis Adjustable Safety Sashes

V1041050 | 5496 | Hi-Vis Orange

V1041060 | 5497 | Hi-Vis Yellow/Green

V1041040 | 5498 | Pink

- Premium 1.5" elastic
- Adjustable elastic waistband and chest straps
- Premium StarTech® reflective tape
- Quick-release waist buckle
- **SIZE:** Fit-All



5496

5497

5498

## Women's Bird's-Eye Safety T-Shirts

V1051850 | 6948 | Hi-Vis Orange

V1051860 | 6949 | Hi-Vis Yellow



- Soft, premium bird's-eye moisture-wicking polyester
- CSA Z96-22 Class 2 Level 2 and ANSI/ISEA 107-2020 Class 2 Type P and R
- Premium StarTech® reflective tape
- Ribbed crew neck
- Chest pocket with hook and loop closure
- Radiophone clip strap
- Tailored for women's fit
- 6948 – UPF 50+ UV protection
- 6949 – UPF 30+ UV protection
- SIZE RANGE:** XS-4XL



6949



## Women's Hi-Vis Polyester Bird's-Eye Long-Sleeve Safety T-Shirts

V1052850 | 6968 | Hi-Vis Orange

V1052860 | 6969 | Hi-Vis Yellow



- Soft, premium bird's-eye moisture-wicking polyester
- CSA Z96-22 Class 2 Level 2 and ANSI/ISEA 107-2020 Class 3 Type P and R
- Premium StarTech® reflective tape
- Ribbed crew neck
- Chest pocket with hook and loop closure
- Radiophone clip strap
- Long sleeve with thumb hole on cuffs
- Tailored for women's fit
- 6968 – UPF 50+ UV protection
- 6969 – UPF 30+ UV protection
- SIZE RANGE:** XS-4XL



6968



6969



## Women's Hi-Vis Safety Shirt

V2121250 | 4441W | Orange



- 100% hi-vis cotton twill, 5.9 oz (200 GSM)
- Lightweight but durable, soft-to-skin touch
- CSA Z96-22 Class 2 Level 2
- Button front closure
- 2 chest pockets with button closure
- Pen slot pocket on left-hand side
- SIZE RANGE:** S-4XL



4441W

## Women's Hi-Vis Safety Pants

V2121350 | 4462W | Orange

V2121380 | 4463W | Navy



- 4462W – 100% hi-vis cotton twill, 5.9 oz (200 GSM)
- 4463W – 65% Polyester 35% cotton blend (195 GSM)
- CSA Z96-22 Class 3 Level 2 when worn with a hi-vis top featuring armbands
- Elasticized waist for maximum comfort
- Belt Loop, zip fly
- 2 Front slash pockets and 2 hip pockets
- Cargo pocket with flap on left leg
- Tool pocket and ruler pocket on right leg
- Hammer loop
- Double-layer reinforced knee panel
- SIZE RANGE:** S-4XL



4462W



4463W

## Women's Hi-Vis Fleece Safety Hoodies

V1060850 | 6924W | Hi-Vis Orange

V1060860 | 6925W | Hi-Vis Yellow

- Premium 10.5 oz (360 GSM) polyester fleece
- CSA Z96-22 Class 2 Level 2 (becomes Class 3 when worn with hi-vis pant featuring reflective leg bands) and ANSI/ISEA 107-2020 Class 3 Type P and R
- Double-stitched premium StarTech® reflective tape
- Detachable drawstring hood
- Elastic cuffs and hem
- 2 front slash pockets
- Full front zipper closure
- 2 radiophone clip straps
- Tailored for a women's fit
- **Size Range:** XS-4XL

6924W

6925W



## Women's Quilted Hooded Polar Fleece Shirt

V3080790 | 415RBW | Red-Black Plaid

**NEW**

- Made with boa-lined fleece for extra warmth and comfort
- Features a fleece drawstring hood
- 2 chest pockets with button closure and 2 lower side pockets
- Full front zipper closure with buttons
- 1 inner pocket on right-hand side
- Tailored for a women's fit
- **SIZE RANGE:** XS-4XL

415RBW



## Hi-Vis Quilted Freezer Jackets

V1170150 | 5015 | Hi-Vis Orange

V117015A | 5015A | Hi-Vis Orange

V1170160 | 5016 | Hi-Vis Yellow/Green

V1170170 | 5017 | Black

- Woven diamond-quilted polyester with 3.5 oz (120 GSM) insulation
- 5015/5015A/5016 – CSA Z96-22 Class 2 Level 2 and ANSI/ISEA 107-2020 Class 3 Type P and R
- 5017 – CSA Z96-22 Class 1 Level 2 and ANSI/ISEA 107-2020 Class 1 Type O
- Double-stitched premium StarTech® reflective tape
- Rib knit gusseted action back for working comfort
- Rib knit cuffs
- 2 front slash pockets
- 1 inside chest cell phone pocket
- Black microfleece comfort collar
- Unisex – Women's fit 2 sizes up (e.g., Men's 2XS = Women's S)
- **SIZE RANGE:** 2XS-5XL

5015



5015A



5016



5017



5017



# WOMEN'S SAFETY WEAR 2023

## Women's Safety Poly/Cotton Coverall

V2020450 | 5514W | Orange



- 7 oz (230 GSM) poly/cotton
- CSA Z96-22 Class 3 Level 2
- Premium StarTech® reflective tape
- Contoured design is tailored especially for women
- 2-way heavy-duty brass zipper
- Adjustable snap wrists
- 7 storage pockets: 2 back, 2 chest, 2 side, 1 tool
- 2 pass-through pockets
- All pockets and key stress points bar-tacked for strength
- Action back
- Elastic on the back on either side of waistband
- UPF 50+ UV protection
- SIZE RANGE:** XS-3XL

5514W



Action back



Adjustable snap wrists

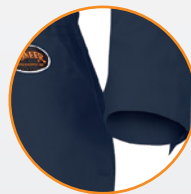
## Women's 2-Tone Poly/Cotton Safety Coverall

V2021450 | 5514WBB | Hi-Vis Orange/Navy



- 7 oz (230 GSM) poly/cotton
- 2-tone design with navy bottom to minimize soiling and a hi-visibility orange top
- CSA Z96-22 Class 3 Level 2
- 2" double-sewn premium StarTech® reflective tape
- Contoured design is tailored especially for women
- 2-way heavy-duty brass zipper
- Adjustable snap wrists
- 7 storage pockets: 2 back, 2 chest, 2 side, 1 tool
- 2 pass-through pockets
- Left-arm pocket with pen slots
- All pockets and key stress points bar-tacked for strength
- Action back
- Elastic on the back on either side of waistband
- UPF 50+ UV protection
- SIZE RANGE:** XS-3XL

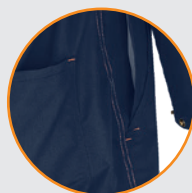
5514WBB



Adjustable snap wrists



2" double-sewn premium StarTech® reflective tape



All pockets and key stress points bar-tacked for strength

# WOMEN'S SAFETY WEAR 2023



## Women's FR-Tech® 88/12 7 oz FR/ARC-Rated Safety Coveralls

V2541150	7702W	Hi-Vis Orange
V2541110	7704W	Royal Blue



- FR-Tech® 88% premium cotton blended with 12% high-tenacity nylon, 7 oz (240 GSM)
- Material and all components meet CGSB 155.20-2017 and NFPA 2112-2018, certified to UL
- Contoured design is tailored especially for women
- 7702W – CSA Z96-22 Class 3 Level 2 and Class 3 Level FR
- 7704W – CSA Z96-22 Class 1 Level 2 and Class 1 Level FR
- Meets ASTM F1506-20A, NFPA 70E-2021 and CSA Z462-2021
- ATPV 9.7 cal/cm<sup>2</sup> (Arc Thermal Protective Value)
- ARC 2 Arc Rating Category
- Average Thermal Protective Performance (TPP) value: 8.4 cal/cm<sup>2</sup>
- Double-stitched premium StarTech® FR reflective tape
- Sewn with aramid inherently FR thread
- Flame resistance guaranteed for the life of the garment
- All pockets and key stress points bar-tacked for strength
- Radiophone clip strap
- 2-way FR brass zipper
- 7 storage pockets: 2 back, 2 chest, 2 side, 1 tool
- 2 pass-through pockets
- Adjustable wrists and ankles
- Action back
- Elastic on the back on either side of waistband
- SIZE RANGE:** XS-3XL

7702W



7704W



Adjustable wrists and ankles



Action back



Elastic on the back on either side of waistband

## Women's Hi-Vis Traffic Safety Coverall

V1071161 | 5999AW | Hi-Vis Yellow/Green

**NEW**

- Polyester knit
- CSA Z96-22 Class 3 Level 2 and ANSI/ISEA 107-2020 Class 3 Type P and R
- Premium StarTech® reflective tape
- 4" contrasting tape meets WorkSafeBC/DOT configuration
- Designed and tailored to a woman's fit
- Mesh ventilation panels on upper arms and legs
- 2-way brass zipper
- 2 radiophone clip straps
- 2-way 28" leg zippers for ventilation and easy boot access
- Adjustable snap wrists
- 7 storage pockets: 2 rear, 2 chest, 2 side, 1 tool
- Hammer loop
- 2 pass-through pockets
- Elastic waist
- **SIZE RANGE:** XS-3XL



5999AW

## Women's Hi-Vis Traffic Safety Jacket

V1071260 | 5999JW | Hi-Vis Yellow/Green

**NEW**

- Polyester knit
- CSA Z96-22 Class 2 Level 2 (becomes Class 3 when worn with hi-vis pant featuring reflective leg bands) and ANSI/ISEA 107-2020 Class 3 Type P and R
- Premium StarTech® reflective tape
- Designed and tailored to a woman's fit
- 4" contrasting tape meets WorkSafeBC/DOT configuration
- Mesh ventilation panels on upper arms
- 2-way brass zipper
- 2 radiophone clip straps
- Adjustable snap wrists
- 5 storage pockets: 2 chest, 2 front slash, 1 cell phone
- **SIZE RANGE:** XS-3XL



5999JW

## Women's Hi-Vis Traffic Safety Overall

V1071460 | 6000W | Hi-Vis Yellow/Green

**NEW**

- Polyester knit
- CSA Z96-22 Class 2 Level 2 (becomes Class 3 when worn with CSA Class 2 Level 2 top featuring reflective armbands) and ANSI/ISEA 107-2020 Class E Supplemental Type
- Premium StarTech® reflective tape
- Designed and tailored to a woman's fit
- 4" contrasting tape meets WorkSafeBC/DOT configuration
- Mesh ventilation panels on upper legs
- 2-way brass zipper
- Radiophone clip strap
- 2-way 28" leg zippers for ventilation and easy boot access
- 7 storage pockets: 2 rear, 2 chest, 2 side, 1 tool
- Hammer loop
- 2 pass-through pockets
- Elastic waist and suspenders
- **SIZE RANGE:** XS-3XL



6000W



2-way 28" leg zippers for ventilation and easy boot access

## Women's Hi-Vis Traffic Safety Pants

V1071360 | 5999PW | Hi-Vis Yellow/Green

**NEW**

- Polyester knit
- CSA Z96-22 Class 3 Level 2 when worn with CSA Class 2 Level 2 top featuring reflective armbands
- ANSI/ISEA 107-2020 Class E Supplemental Type
- Premium StarTech® reflective tape
- Designed and tailored to a woman's fit
- 4" contrasting tape meets WorkSafeBC/DOT configuration
- Mesh ventilation panels on upper legs
- Brass zipper fly access
- 2-way 28" leg zippers for ventilation and easy boot access
- 5 storage pockets: 2 side, 2 back, 1 tool
- Elastic waist with drawstring
- **SIZE RANGE:** XS-3XL



5999PW

## Women's Hi-Vis Waterproof 300D Polyester/PU Jackets

V1081550 | 5626W | Hi-Vis Orange

V1081560 | 5628W | Hi-Vis Yellow



WATERPROOF

- 100% waterproof 300D oxford polyester with PU coating
- CSA Z96-22 Class 2 Level 2 (becomes Class 3 when worn with hi-vis pant featuring reflective leg bands)
- ANSI/ISEA 107-2020 Class 3 Type P and R
- Premium StarTech® reflective tape
- Taped and heat-sealed seams
- Superior tear- and abrasion-resistant fabric
- Designed and tailored for a women's fit
- Liberal fit and full back vent for working comfort
- 2 lower flap pockets
- Half mesh-lined vented back
- Full front zipper
- Detachable hood folds into collar
- Dropped back hem for ergonomic fit
- SIZE RANGE:** XS-4XL



5626W



5628W



Detachable hood folds into collar

## Women's Hi-Vis Waterproof 300D Polyester/PU Pants

V1081650 | 5627W | Hi-Vis Orange

V1081660 | 5629W | Hi-Vis Yellow



WATERPROOF

- 100% waterproof 300D oxford polyester with PU coating
- CSA Z96-22 Class 3 Level 2 when worn with Class 2 Level 2 top featuring reflective arm bands
- ANSI/ISEA 107-2020 Class E Supplemental Type
- Premium StarTech® reflective tape
- Taped and heat-sealed seams
- Superior tear- and abrasion-resistant fabric
- Designed and tailored for a women's fit
- Elastic waistband for comfortable fit
- 2-snap adjustment on leg hems to fit snug to boots
- SIZE RANGE:** XS-4XL



5627W



5629W



2-snap adjustment on leg hems to fit snug to boots



# WOMEN'S SAFETY WEAR 2023



WATERPROOF  
& WINDPROOF



ASTM F2732

## Women's Hi-Vis 100% Waterproof 7-in-1 Jackets

V1121150 | 5020W | Hi-Vis Orange

V1121151 | 5020BBW | Hi-Vis Orange

V1121161 | 5021BBW | Hi-Vis Yellow

**NEW**



5020W



5020BBW



5021BBW

- 300 denier PU-coated oxford polyester with 5.3 oz (180 GSM) warm quilted polyester lining
- Exclusively designed to fit women
- CSA Z96-22 Class 2 Level 2 (if sleeves are not zipped off, becomes Class 3 when worn with hi-vis pant featuring reflective leg bands) and ANSI/ISEA 107-2020 Class 3 Type P and R
- Double-stitched premium StarTech® reflective tape
- 4" contrasting tape meets WorkSafeBC/DOT configuration
- 100% waterproof and windproof
- Double-stitched, taped, and heat-sealed seams
- Complements models 5040W, 5040BBW, 5041BBW
- **OUTER JACKET FEATURES:**  
Quilted lining, 2 inner pockets, 7" side zippers for greater mobility, storm cuffs, embroidery access zipper, drawstring waist with toggles, detachable snap hood, 2 large front cargo pockets, full front zipper with snap storm placket
- **INNER JACKET FEATURES:**  
Quilted lining, detachable sleeves, comfort collar, 2 large front cargo pockets, 2 inner pockets, reversible to black
- **7 WAYS TO WEAR:**
  - Outer jacket alone
  - Outer jacket with inner jacket
  - Outer jacket with inner jacket without sleeves
  - Inner jacket alone
  - Inner jacket without sleeves
  - Inner jacket reversed
  - Inner jacket reversed without sleeves
- **SIZE RANGE:** XS-4XL



## Women's Hi-Vis 100% Waterproof Overalls

V1121650	5040W	Hi-Vis Orange
V1121651	5040BBW	Hi-Vis Orange
V1121661	5041BBW	Hi-Vis Yellow

**NEW**



WATERPROOF  
& WINDPROOF



ASTM F2732

- 300D PU-coated oxford polyester with 5.3 oz (180 GSM) warm quilted polyester lining
- Exclusively designed to fit women
- CSA Z96-22 Class 2 Level 2 (becomes Class 3 when worn with CSA Class 2 Level 2 top featuring reflective armbands) and ANSI/ISEA 107-2020 Class E Supplemental Type
- Double-stitched premium StarTech® reflective tape
- 4" contrasting tape meets WorkSafeBC/DOT configuration
- 100% waterproof and windproof
- Double-stitched, taped, and heat-sealed seams
- 20" boot access
- 2-way leg zippers with snap storm covers
- Elastic waist
- 2 front slash cargo pockets
- Hammer loop
- 2-way zipper with brass snap storm placket
- Premium adjustable elastic suspenders with quick-release clips
- Sealed inside chest pocket with pen slot
- Outside chest pocket with flap
- Complements 7-in-1 models 5020W, 5020BBW, 5021BBW
- **SIZE RANGE:** XS-4XL



5040W



5040BBW



5041BBW



2-way leg zippers with snap storm covers



20" boot access



Premium adjustable elastic suspenders with quick-release clips



# WOMEN'S SAFETY WEAR 2023

## Women's Flame-Resistant Quilted Cotton Safety Parkas

V2561210 | 5523W | Royal Blue

V2561250 | 5533W | Hi-Vis Orange

**NEW**



- FR-Tech® 88% premium cotton blended with 12% high-tenacity nylon, 10 oz (340 GSM)
- 6.5 oz (220 GSM) modacrylic polyester FR insulation
- Lining: 100% FR cotton
- Exclusively designed to fit women
- Material and all components meet CGSB 155.20-2017 and NFPA 2112-2018, certified to UL
- Meets ASTM F1506-20A, NFPA 70E-2021 and CSA Z462-2021
- 5523W – CSA Z96-22 Class 1 Level 2 and Class 1 Level FR
- 5533W – CSA Z96-22 Class 2 Level 2 and Class 2 Level FR
- ATPV 58 cal/cm<sup>2</sup> (Arc Thermal Protective Value)
- ARC 4 Arc Rating Category
- Average Thermal Protective Performance (TPP) value: 14.9 cal/cm<sup>2</sup>
- Sewn with inherently FR thread
- All metal components are concealed to ensure no arc flash conductivity
- Premium StarTech® FR reflective tape
- Tough double-stitched seams
- Radiophone clip strap
- FR brass non-locking zipper
- Fleece hand warmers
- Underarm gussets for extra mobility
- 5 storage pockets: 2 chest, 2 lower, 1 inside
- Action back, elastic waist and aramid storm cuffs
- SIZE RANGE:** XS-3XL

5523W



5533W



Fleece hand warmers



Tough double-stitched seams



aramid storm cuffs

## Women's Flame-Resistant Quilted Cotton Safety Overalls

V2561311 | 5524AW | Royal Blue

V2561351 | 5534AW | Hi-Vis Orange

**NEW**

- FR-Tech® 88% premium cotton blended with 12% high-tenacity nylon, 10 oz (340 GSM)
- 5.3 oz (180 GSM) modacrylic polyester FR insulation
- Lining: 100% FR cotton
- Exclusively designed to fit women
- 5524AW – CSA Z96-22 Class 1 Level 2 and Class 1 Level FR
- 5534AW – CSA Z96-22 Class 2 Level 2 and Class 2 Level FR
- Material and all components meet CGSB 155.20-2017 and NFPA 2112-2018, certified to UL
- Sewn with inherently FR thread
- All metal components are concealed to ensure no arc flash conductivity
- Meets ASTM F1506-20A, NFPA 70E-2021 and CSA Z462-2021
- ATPV 58 cal/cm<sup>2</sup> (Arc Thermal Protective Value)
- ARC 4 Arc Rating Category
- Average Thermal Protective Performance (TPP) value: 14.9 cal/cm<sup>2</sup>
- Premium StarTech® FR reflective tape
- Tough double-stitched seams
- Radiophone clip strap
- 1-way FR brass non-locking zipper with storm placket
- 7 storage pockets: 2 back, 2 chest, 2 side, 1 tool
- Adjustable elastic suspenders and elastic waist
- 3/4 zipper plus snaps on each side
- Hammer loop
- SIZE RANGE:** XS-3XL



**FR-TECH®**  
ARC 4 ATPV 58



1-way FR brass non-locking zipper with storm placket



Tough double-stitched seams

## Hoods for Women's Flame-Resistant Quilted Cotton Safety Parka

V2562140 | 523AW | Royal Blue

V2562150 | 524W | Hi-Vis Orange

**NEW**

- FR-Tech® 88% premium cotton blended with 12% high-tenacity nylon, 10 oz (340 GSM)
- Insulation: Modacrylic viscose blend
- Lining: 100% FR cotton
- Exclusively designed to fit women
- Material and all components meet CGSB 155.20-2017 and NFPA 2112-2018, certified to UL
- Sewn with inherently FR thread
- All metal components are concealed to ensure no arc flash conductivity
- Meets ASTM F1506-20A, NFPA 70E-2021 and CSA Z462-2021
- ATPV 58 cal/cm<sup>2</sup> (Arc Thermal Protective Value)
- ARC 4 Arc Rating Category
- Average Thermal Protective Performance (TPP) value: 14.9 cal/cm<sup>2</sup>
- Tough double-stitched seams
- FR drawstring with toggle
- Large hook and loop closure
- Concealed metal snap
- Snaps onto parka
- SIZE:** O/S



**FR-TECH®**  
ARC 4 ATPV 58



FR drawstring with toggle

## Women's Fitter's Cow Grain Gloves

V5020200 | 531W | Yellow Back

- One-piece palm
- Outside elastic, rubberized cuff
- Cut to women's fit
- By dozen or 10 dz/pkg
- **SIZE:** O/S

531W



## Women's Insulated Cow Grain Gloves

V5080600 | 536LW | Yellow Back

- One-piece palm
- Light fleece lining
- Outside elastic, polyethylene cuff
- Woman's cut
- By dozen or 6 dz/pkg
- **SIZE:** O/S

536LW



## PVC Steel Toe/Plate Boots

V4710270 | 1022 | Black

- CSA Class 1 steel toe/steel plate
- Static dissipative
- Generous, comfortable fit
- Durable and flexible PVC shaft
- Heavy-duty PVC compounded sole
- Puncture- and tear-resistant
- 2 cut-off lines for shorter boot formats
- Not recommended for prolonged standing in wet cement, wash frequently
- Men's sizes 3-13 are equal to Women's sizes 5-15
- **SIZE RANGE:** 3-13

1022



## PVC Plain Toe Boots

V4710170 | 1011 | Black

- Generous, comfortable fit
- Durable and flexible PVC shaft
- Heavy-duty PVC compounded sole
- Puncture- and tear-resistant
- 2 cut-off lines for shorter boot formats
- Men's sizes 3-13 are equal to Women's sizes 5-15
- **SIZE RANGE:** 3-13

1011



## Ranpro Steel Toe/Steel Plate PU Boots

V4240640 | B405FUL.GR | Green

- Steel toe and mid-sole
- Oil, gas, mineral, organic and chemical resistant
- Lightweight and extremely comfortable
- Innovative heel-tab for easy removal
- Reinforced ankle protection and extra ankle room to prevent rubbing
- Upper grip on boot allows you to easily put on boots
- Cut-off line for customizable boot height
- Ergonomically designed upper boot to allow for a better range of movement at the calf
- Water channeling tire tread-inspired soles
- Non-clogging sole
- Rated to -20°C
- Men's sizes 4-15 are equal to Women's sizes 6-17
- **SIZE RANGE:** 4-15

B405FUL.GR

